

THEORY WORKSHEET no. 6

DO YOU REMEMBER MAKING NOTES WITH 4 COUNTS INTO OTHER NOTES? WELL, HERE THEY ARE AGAIN. THERE ARE TWO NEW NOTES. THEY ARE: ♪ [½ COUNT] AND ♪ [¼ COUNT]. NOTICE HOW MANY FLAGS EACH ONE GETS!

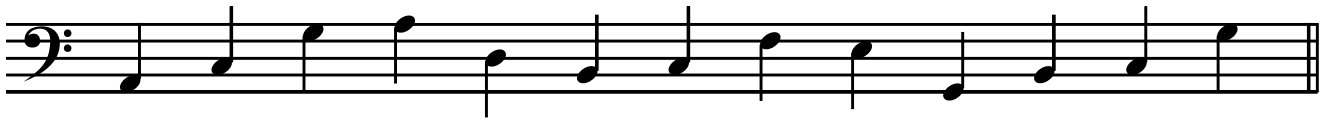
The first staff (treble clef) contains 11 notes with flags below: 2, 4, |, 2, 3, ½, |, |, 3, ¼, 4. The second staff (bass clef) contains 11 notes with flags below: |, 3, |, 2, ¼, |, 3, 2, ½, |, ¼. The third staff (treble clef) contains 11 notes with flags below: 4, |, 3, |, ½, 2, |, ¼, 4, 3, |.

NOW DRAW THESE BASS CLEF NOTES ON THE LINES:

Four empty bass clef staves with letter names for notes below them:
Staff 1: G D A F B A D G B D F A D B
Staff 2: F A D F B D G B F A B D A F
Staff 3: D G A B F A D B G A F D G F
Staff 4: B D G B A G F D B A G D F A

TURN OVER →

HERE ARE ALL DIFFERENT NOTES IN BOTH TREBLE AND BASS CLEFS. WRITE THEIR NAMES ON THE LINES BELOW :



LASTLY, PUT A BASS CLEF AT THE BEGINNING OF EACH LINE AND DRAW IN BARLINES WHERE THEY SHOULD BE :



Mark :