

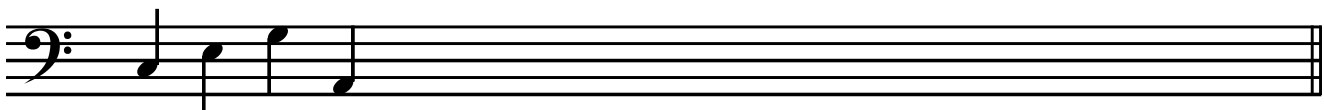
THEORY WORKSHEET no. 5

IN THIS FIRST EXERCISE, WRITE HOW MANY COUNTS EACH NOTE GETS UNDERNEATH. WATCH OUT FOR THESE ONES :

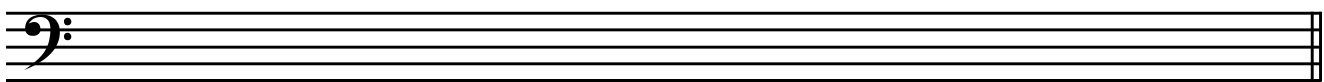
$\text{♩} = \frac{1}{2}$ [HALF a count] AND $\text{♩} = \frac{1}{4}$ [a QUARTER of a count]



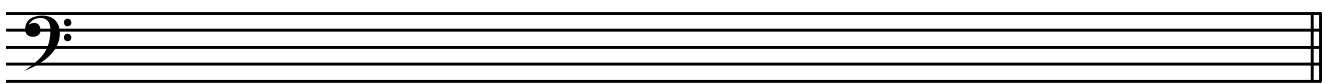
NOW DRAW THESE BASS CLEF NOTES IN THE SPACES :



C E G A C A G E C E A G E G A C A C



G E C A C E A G C E A E C G A E G C



C A G E C A G A G A E C E G A C E A

TURN OVER →

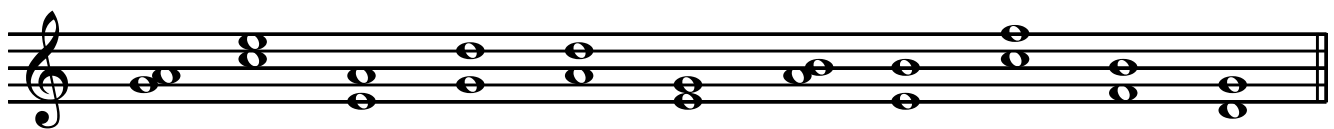
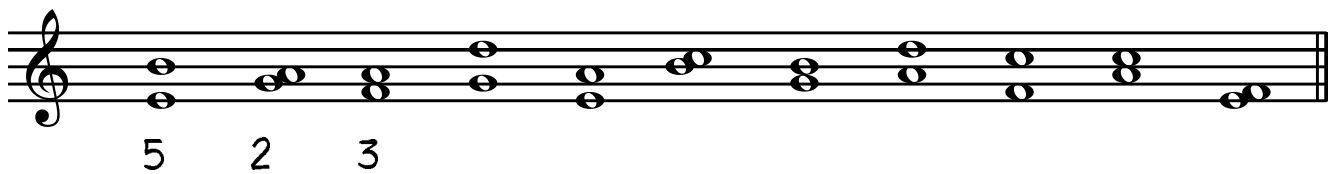
THE RHYME FOR REMEMBERING THE BASS CLEF LINE NOTES GOES LIKE THIS :



CAN YOU REMEMBER THAT?
WRITE THE NOTE NAMES UNDERNEATH :



HERE ARE LOTS OF NOTES ON TOP OF EACHOTHER. HOW FAR APART ARE THEY? DON'T FORGET TO COUNT THE BOTTOM NOTE AS WELL!



GOODBYE!



Mark :