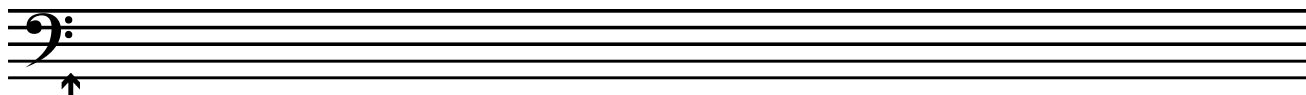
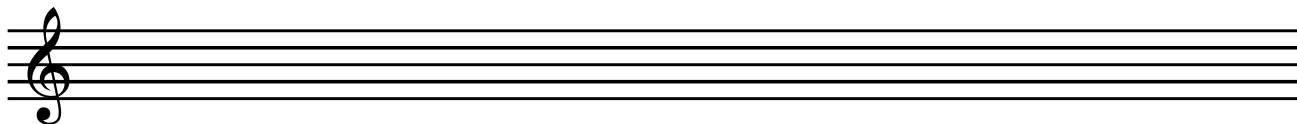


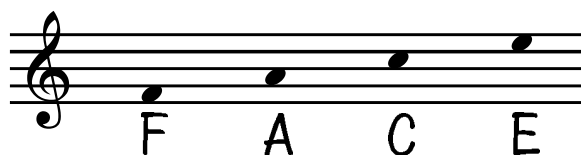
THEORY WORKSHEET no. 1

FIRST OF ALL, SEE IF YOU CAN DRAW A ROW OF TREBLE AND BASS CLEFS. COPY THE ONES ON THE LEFT :



↑
DONT FORGET
THE DOTS!

NOW, CAN YOU REMEMBER WHAT THE SPACE NOTES IN THE TREBLE CLEF (♩) SPELL? HERE THEY ARE :



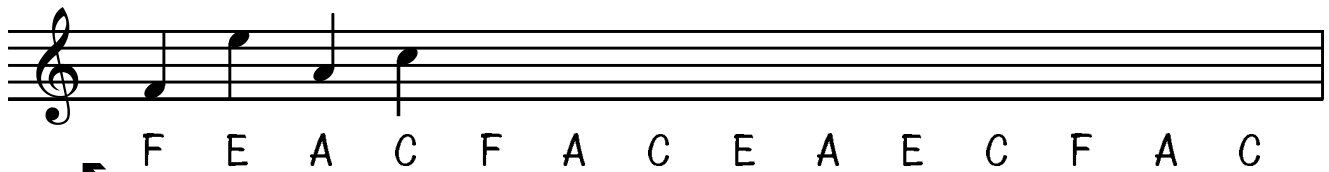
WHAT YOU HAVE TO DO IS PUT THE LETTER NAMES UNDER THESE NOTES :



(ONLY WRITE THE NOTE NAMES !)

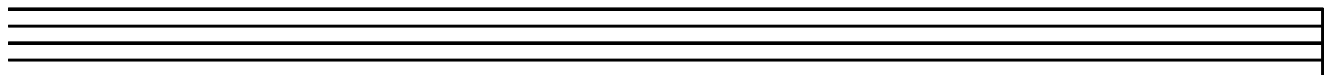
TURN OVER →

NOW YOU HAVE TO DRAW THE NOTES!
SOME HAVE ALREADY BEEN DONE TO SHOW YOU HOW :

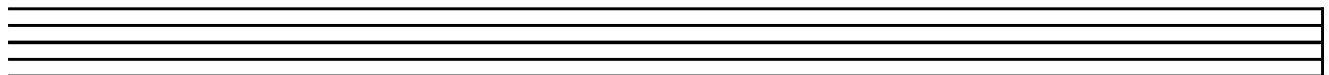


WITH THE NEXT
LINE, DRAW THE
CLEF AS WELL!

* NOTICE HOW THE STICKS GO UP IF
THE NOTE IS BELOW THE MIDDLE LINE
MAKE SURE ALL YOUR STICKS GO
THE RIGHT WAY!



E C F A E A F C E A F C E C



F E A C F A E F C A F E A C

NOW, TO FINISH OFF WITH, WRITE UNDER THESE NOTES
HOW MANY COUNTS EACH ONE GETS :



Mark: