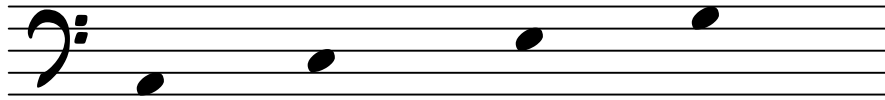


THEORY SHEET 7

BASS CLEF SPACES



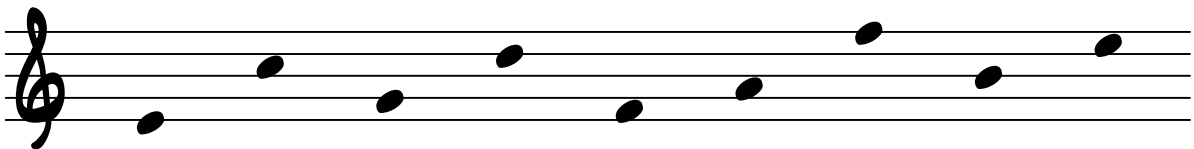
ALL COWS EAT GRASS

NOW NAME THESE NOTES :



.....

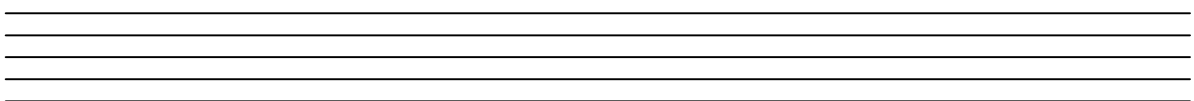
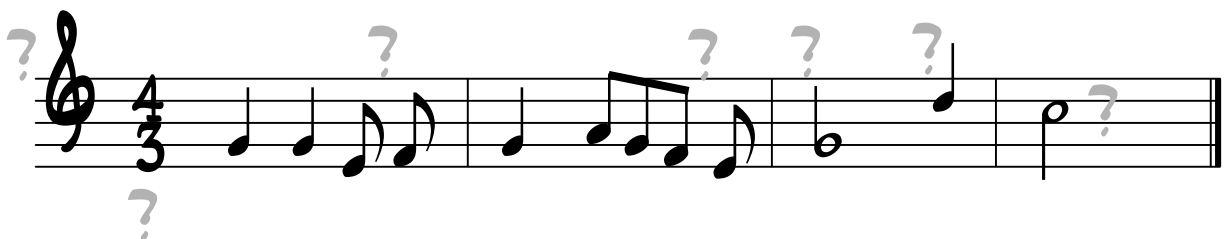
DRAW STICKS ON THESE TREBLE CLEF NOTES AND NAME THEM :



.....

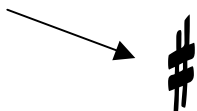
CORRECTING MISTAKES

IN THE MELODY BELOW, SOME MISTAKES HAVE BEEN MADE! CAN YOU COPY IT OUT AND CORRECT THEM ?



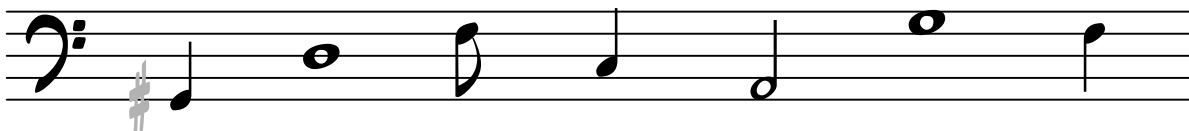
THE SHARP

THIS IS A SHARP



WHEN A SHARP GOES
IN FRONT OF A NOTE,
THE NOTE SOUNDS A
SEMITONE HIGHER

DRAW SHARPS IN FRONT OF THESE NOTES. BE SURE
TO GET THE SHARP EXACTLY ON THE LINE OR SPACE!



NOW MATCH UP THESE TIME SIGNATURES TO THE
RIGHT BARS :

4
4

4
8

3
8

2
4

3
4

3
2



TEACHER'S COMMENT