

THEORY SHEET 2

STICKS GO UP IF THE NOTE IS UNDER THE MIDDLE LINE

AND DOWN IF THEY ARE ABOVE THE MIDDLE LINE

IF THEY ARE ON THE LINE, THEY CAN GO EITHER WAY

DRAW STICKS ON THESE NOTES -- LOOK CAREFULLY!

TREBLE CLEF SPACES

THE SPACE NOTES IN THE TREBLE SPELL " F A C E " :

F A C E

WRITE THE LETTERNAMES UNDER THESE NOTES :

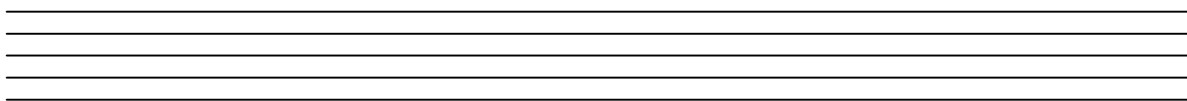
.....

WRITE THE NUMBER OF COUNTS UNDER THE NOTES :

.....



DRAW A TREBLE CLEF AT THE BEGINNING OF THE LINE, THEN DRAW THE NOTES IN THE RIGHT SPACES :



A E C F E A

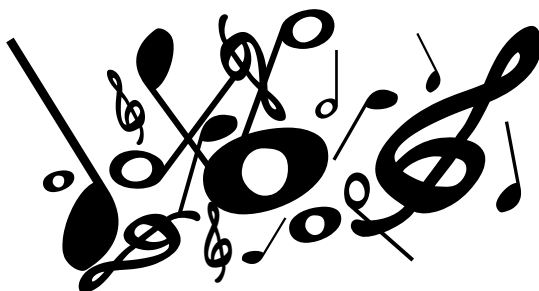
NOW TRY THESE MUSICAL SUMS :

$$\text{quarter note} + \text{quarter note} + \text{quarter note} = \text{half note}$$

$$\text{half note} - \text{quarter note} = \text{quarter note}$$

$$\text{quarter note} + \text{quarter note} + \text{quarter note} - \text{quarter note} = \text{half note}$$

IN THE JUMBLE BELOW, SEE HOW MANY SIGNS YOU CAN FIND :



$$\text{treble clef} = \text{quarter note} = \text{half note} = \text{half note} = \text{half note} =$$

TEACHER'S COMMENT