

# THEORIE OEFENBLAD nr. 4

IN DEZE RITMES ZIJN NOTEN WEGGELATEN BIJ DE \*. ZET DAAR STEEDS DE JUISTE NOOT OM DE MAAT VOL TE MAKEN.

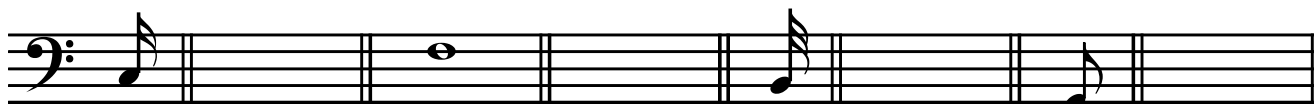
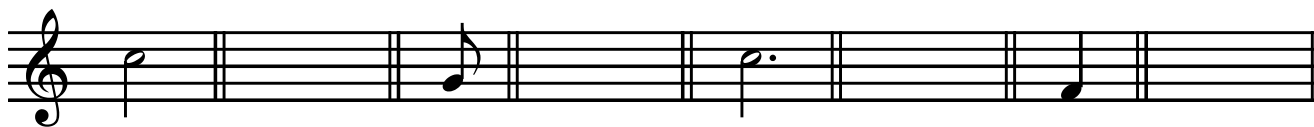
The first staff is in 4/4 time and contains four measures. The first measure has a dotted quarter note followed by an eighth note with an asterisk. The second measure has a quarter note, an eighth note, and a quarter note with an asterisk. The third measure has a quarter note, an eighth note, a quarter note, and a dotted quarter note with an asterisk. The fourth measure has a quarter note, an eighth note, and a quarter note with an asterisk. The second staff is in 3/4 time and contains four measures. The first measure has a dotted quarter note with an asterisk. The second measure has a quarter note, an eighth note, and a quarter note with an asterisk. The third measure has a quarter note, an eighth note, a quarter note, and a dotted quarter note with an asterisk. The fourth measure has a quarter note, an eighth note, and a quarter note with an asterisk. The third staff is in 4/4 time and contains four measures. The first measure has a dotted quarter note with an asterisk. The second measure has a quarter note, an eighth note, a quarter note, and a dotted quarter note with an asterisk. The third measure has a quarter note, an eighth note, a quarter note, and a dotted quarter note with an asterisk. The fourth measure has a quarter note, an eighth note, a quarter note, and a dotted quarter note with an asterisk.

BIJ DE VOLGENDE OEFENING IS SOMS DE SLEUTEL OF DE NOOT WEGGELATEN. VUL IN WAT WEGGELATEN IS (DE NAAM VAN DE NOOT STAAT ERBIJ. PAS OP VOOR KRUISEN EN MOLLEN!

The first staff has a treble clef, a whole note, a bass clef, a whole note, a bass clef, a whole note, and a bass clef. The notes are labeled below as Fis, C, Ges, As, G, and Des. The second staff has a bass clef, a whole note, a treble clef, a whole note, a bass clef, a whole note, and a bass clef. The notes are labeled below as E, Ces, Es, Des, F, and Es. The third staff has a bass clef, a whole note, a bass clef, a whole note, a treble clef, a whole note, a bass clef, a whole note, and a treble clef. The notes are labeled below as Bes, Bes, D, Gis, As, and B.

SLA NU OM →

SCHRIJF NU IN DE LEGE MATEN NOTEN MET DEZELFDE AANTAL TELLEN ALS DE NOOT ERVOOR :



SCHRIJF DE ANTWOORDEN VAN DEZE VRAGEN OP DE STIPPELIJNEN :


DIT TEKEN  BETEKENT .....

ALS IK DIT ZIE : *f* MOET IK ..... SPELEN.

EEN MOL (  $\flat$  ) MAAKT DE NOOT EEN HALVE TOON .....

IS DIT TEKEN :  VOOR DE HOGE NOTEN OF DE LAGE NOTEN?  
.....

DIT TEKEN : *p* BETEKENT ..... SPELEN.

ALS IK PUNTJES ONDER DE NOTEN ZIE :  MOET IK ZE  
..... SPELEN

DIT TEKEN :  HEET EEN .....

Cijfer :