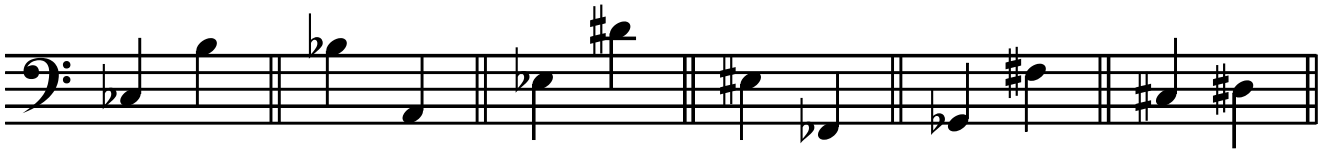


THEORY EXERCISE SHEET no. 9

IN THE BAR NEXT TO EACH REST WRITE A NOTE WITH THE SAME NUMBER OF COUNTS. IF THERE IS MORE THAN ONE REST, WRITE A NOTE EQUAL TO THE TOTAL VALUE :



NOW, IN THE NEXT TWO LINES THERE ARE PAIRS OF ENHARMONIC NOTES. SOME MISTAKES HAVE BEEN MADE. IF THE SECOND NOTE IS NOT ENHARMONICALLY THE SAME, CROSS IT OUT AND WRITE THE CORRECT ONE :



(USE THE PIANO TO HELP IF YOU LIKE!)



PUT A TICK (✓) BY THESE ITALIAN WORDS IS THE ENGLISH MEANING IS CORRECT, AND A CROSS (X) IF IT ISN'T :

- Piano = bud.....
- legato = joined together.....
- < = get buder.....
- > = a staccato dot.....
- rit..... = get sbwer.....
- mf* = more forte.....
- ||: || = play only once.....
- f* = budly.....

TURN OVER →

