

THEORY EXERCISE SHEET no. 4

FIRSTLY, HERE ARE SOME RHYTHMS WITH NOTES LEFT OUT AT THE * SIGNS. DRAW IN THE NOTE VALUE :

Three musical staves showing rhythmic exercises. The first staff is in 4/4 time, the second in 3/4 time, and the third in 4/4 time. Each staff contains a sequence of notes with asterisks above them indicating missing note values.

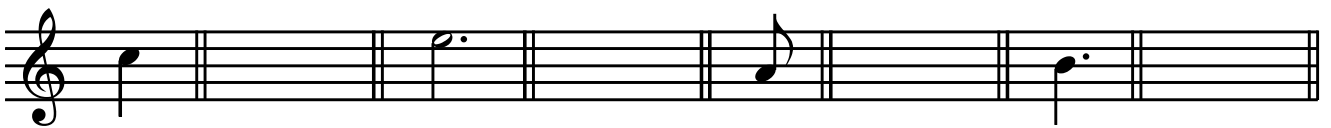
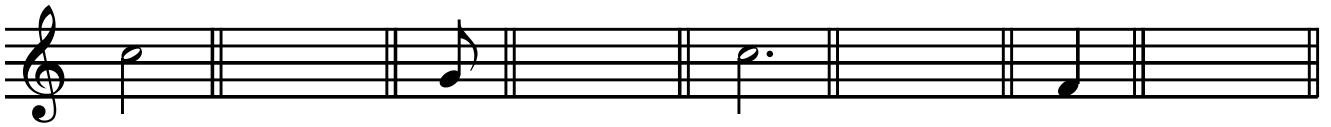
NOW, IN THE NEXT EXERCISE, SOMETIMES THE CLEF HAS BEEN LEFT OUT, AND SOMETIMES THE NOTE. WRITE IN WHATEVER IS MISSING (WATCH OUT FOR SHARPS & FLATS!) :

Three musical staves for a note identification exercise. Each staff contains six notes with missing clefs and some missing note names. The notes are labeled below the staves:

- Staff 1: F sharp, C, G flat, A flat, G, D flat
- Staff 2: E, C flat, E flat, D sharp, F, E flat
- Staff 3: B flat, B flat, D, G sharp, A flat, B

TURN OVER →

NOW, IN THE EMPTY BARS WRITE A REST WITH THE SAME
NUMBER OF COUNTS AS THE NOTE SHOWN :



WRITE THE ANSWERS TO THESE QUESTIONS ON THE
DOTTED LINES :


THIS SIGN  MEANS

WHEN I SEE THIS : *f* I HAVE TO PLAY

THE FLAT SIGN (*b*) MAKES THE NOTE 1/2 A TONE

IS THIS SIGN :  FOR THE HIGH NOTES OR THE LOW ONES?
.....

THIS SIGN : *p* MEANS PLAY

WHEN I SEE DOTS UNDER THE NOTES :  I HAVE TO
PLAY THEM

THIS SIGN :  IS CALLED A

Mark :