


THE FLAT (b)

A FLAT SIGN IN FRONT OF A NOTE MAKES THE NOTE SOUND $\frac{1}{2}$ A TONE LOWER - SO WHEN WE HAVE THIS NOTE  THEN WE HAVE TO PLAY B \flat . FIND IT ON THE PIANO :



WRITE FLATS IN FRONT OF THESE NOTES :



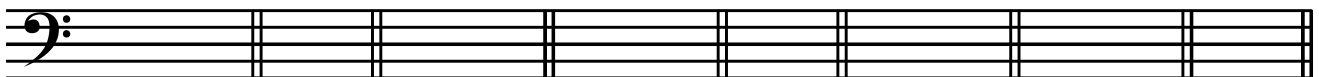
[MAKE SURE YOUR FLATS ARE EXACTLY ON THE SAME LINE OR SPACE AS THE NOTE !!



NOW WRITE THESE NOTES - NOT ALL HAVE FLATS!

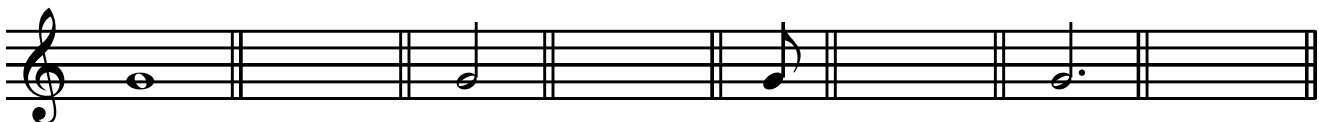


B flat E flat C A flat F G flat F flat D flat



D flat A A flat E flat G C flat B flat F

LASTLY, AFTER THESE NOTES WRITE A NOTE WHICH IS HALF AS LONG :



Mark :