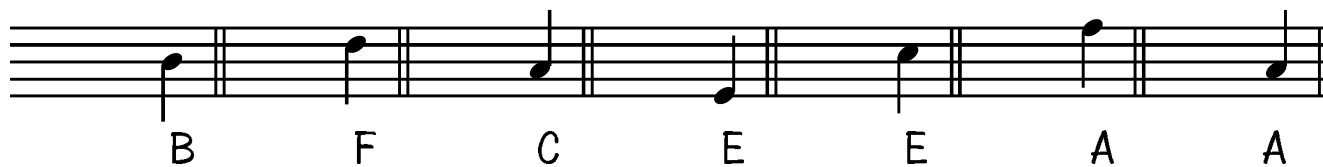
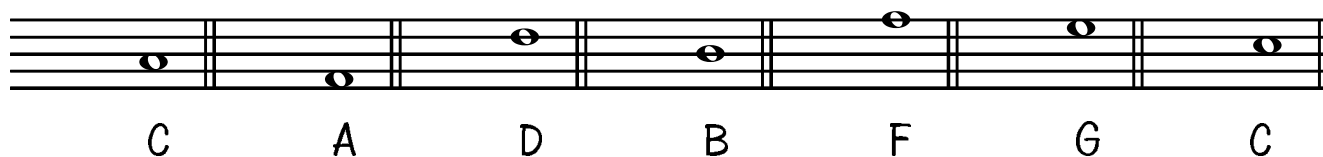


THEORY EXERCISE SHEET no. 1

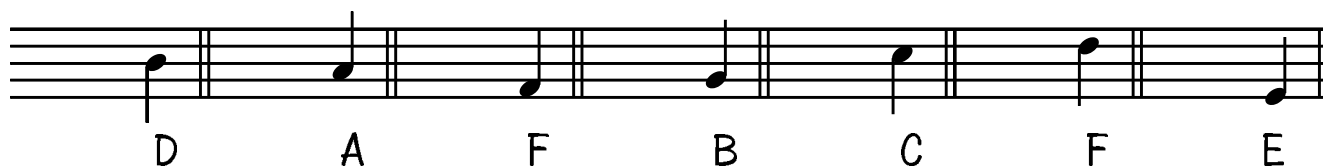
WRITE THE CORRECT CLEFS IN FRONT OF THE NOTES.
THE LETTERS UNDERNEATH SHOW WHICH NOTE IT SHOULD
BE. TAKE CARE TO PUT THE CLEFS ON THE RIGHT LINE!



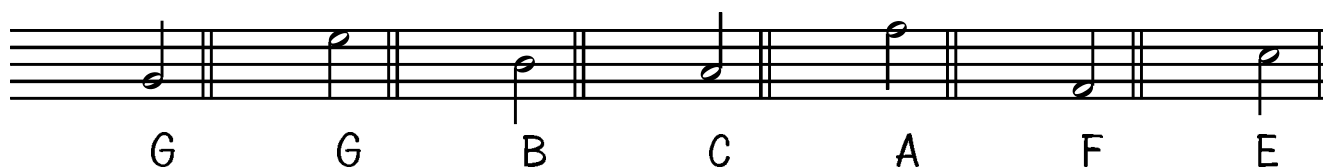
B F C E E A A



C A D B F G C



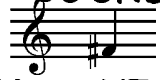
D A F B C F E

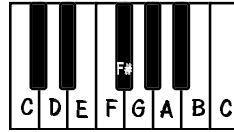


G G B C A F E

WRITE UNDERNEATH THESE INTERVALS HOW FAR APART
THEY ARE :

THE SHARP (#)

A SHARP IN FRONT OF A NOTE MAKES THE NOTE SOUND $\frac{1}{2}$ A TONE HIGHER, SO WHEN WE SEE THIS NOTE  WE HAVE TO PLAY A NOTE A $\frac{1}{2}$ -TONE HIGHER THAN THE F. FIND THE F# ON THE PIANO:



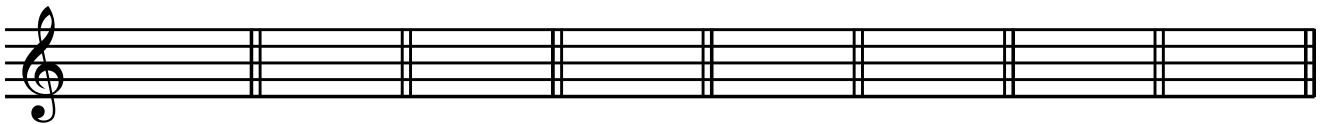
NOW WRITE UNDERNEATH THE NAMES OF THE NOTES. SOME HAVE SHARPS AND OTHERS DON'T - TAKE CARE!



NOW WRITE SHARPS IN FRONT OF THESE NOTES. MAKE SURE THAT THE SIGN IS EXACTLY ON THE LINE OR SPACE THAT THE NOTE IS:



NOW WRITE THESE NOTES WITH SHARPS:



C sharp G sharp B sharp A sharp E sharp D sharp F sharp C sharp
FINALLY, WRITE A NOTE UNDERNEATH THE * TO COMPLETE THE BARS:



Mark :